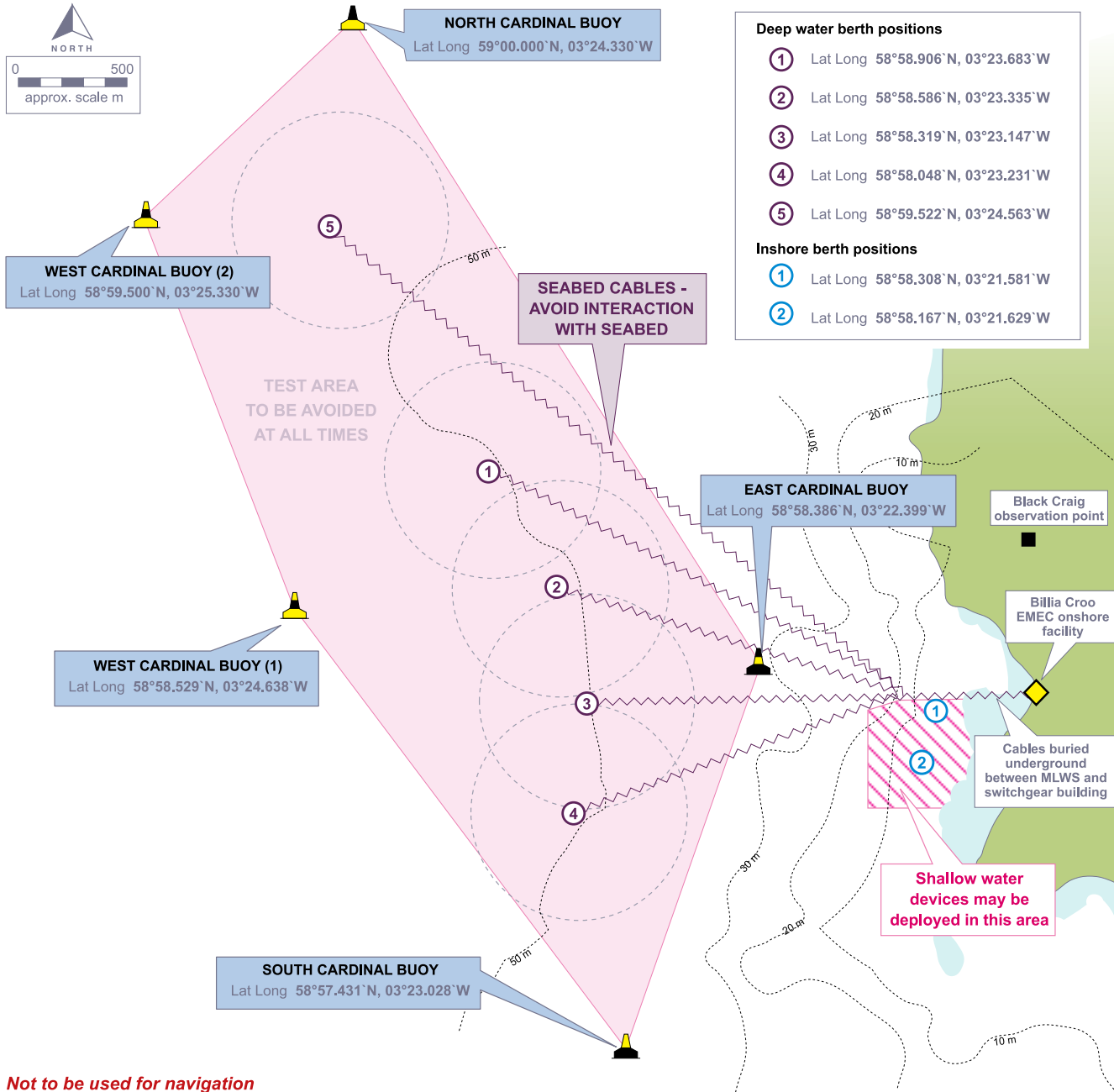
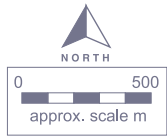


# WAVE TEST SITE



*Not to be used for navigation*

The European Marine Energy Centre Ltd  
Old Academy Business Centre,  
Stromness, ORKNEY, KW16 3AW

Tel: (01856) 852060 Fax: (01856) 852068  
Email: [info@emec.org.uk](mailto:info@emec.org.uk) Web: [www.emec.org.uk](http://www.emec.org.uk)

**24 hr contact - Tel: (01856) 852062**

**Awareness chart note:**

1. Mariners should avoid passing within the shaded area inside the cardinal buoys marking the test site.
2. Significant work will be displayed by the standard notice to mariner routes. (UKHO and [www.orkneyharbours.com](http://www.orkneyharbours.com))
3. Devices will be marked in accordance with NLB and MCA recommendations.
4. Devices can also be deployed in the inshore test site.

