



Ocean Energy  
Europe



SUSTAINABLE ENERGY  
WEEK

# EMEC ORKNEY

THE EUROPEAN MARINE ENERGY CENTRE LTD

## Orkney Ocean Energy Day

Tuesday 3rd June 2014

0900-1200 Marine renewables seminar  
and exhibition at the  
Pickaquoy Centre

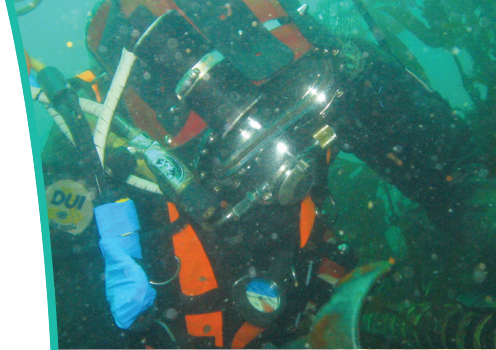
**Marine renewables sites open to the public:**

1200-1400 Hatston Pier

1600-1800 EMEC Billia Croo wave test site

1200-1700 EMEC Eday substation

[www.tinyurl.com/OrkneyOceanEnergyDay2014](http://www.tinyurl.com/OrkneyOceanEnergyDay2014)



T: 01856 852060 • E: [info@emec.org.uk](mailto:info@emec.org.uk) • W: [www.emec.org.uk](http://www.emec.org.uk)





# Orkney Ocean Energy Day

## Tuesday 3rd June 2014

A public open day will take place on Tuesday 3rd June 2014 to showcase the pioneering work taking place with marine renewables in Orkney. An exciting programme of events has been arranged throughout the day.

### THE PROGRAMME WILL INCLUDE:

#### Morning seminar

0900-1045, Pickaquoy Centre, Kirkwall

Featuring speakers from EMEC, technology developers, the Scottish Government, Ocean Energy Europe, and the European Commission, the event will focus on how testing work in Orkney is conquering technical challenges and contributing to industry development, highlighting the pan-European successes and global potential of this exciting, innovative sector.

#### Marine renewables exhibition

1045-1200, Pickaquoy Centre, Kirkwall

Exhibition with EMEC, technology developers and Orkney's marine energy supply chain.

#### Hatston Pier, Kirkwall

Open to public 1200-1400

Meeting point: Northlink vehicle check-in

Tidal energy developers will showcase their innovative machines on Hatston Pier. \*

#### Lyness Pier, Hoy (CANCELLED)

Due to the changing nature of test plans for wave and tidal devices, it is common for machines to move on and off site regularly. As such, the Pelamis P2 machine which was expected to be at Lyness for viewing, will now in fact be at sea at EMEC's Billia Croo wave test site instead.

Please note that the planned session with Lyness Pier open to the public between 1400 and 1600 will therefore no longer take place.\*

#### EMEC Billia Croo wave test site, Outertown, Stromness

Open to public 1600-1800

Meeting point: Car park at Billia Croo

A chance to see inside EMEC's substation and Aquamarine Power's power station, with staff available on site to answer your questions. \*

#### Caldale substation, Eday, EMEC Fall of Warness tidal test site

Open to public 1200-1700

Meeting point: Office at Caldale substation

A chance to see inside EMEC's substation with staff available on site to answer your questions.

Full details on the programme of events can be found at:  
[www.tinyurl.com/OrkneyOceanEnergyDay2014](http://www.tinyurl.com/OrkneyOceanEnergyDay2014).

If you have any queries or particular access requirements (e.g. wheelchair accessibility) please contact EMEC on the details below.

\*marine energy devices on show will depend on developers schedules and the weather.

\*\*individual responsibility to book ferry.

**EMEC** ORKNEY  
THE EUROPEAN MARINE ENERGY CENTRE LTD

 **Ocean Energy Europe**

Supported by:  
 **Energy of ORKNEY**  
 **ORKNEY ISLANDS COUNCIL**



T: 01856 852060 • E: [info@emec.org.uk](mailto:info@emec.org.uk) • W: [www.emec.org.uk](http://www.emec.org.uk)

