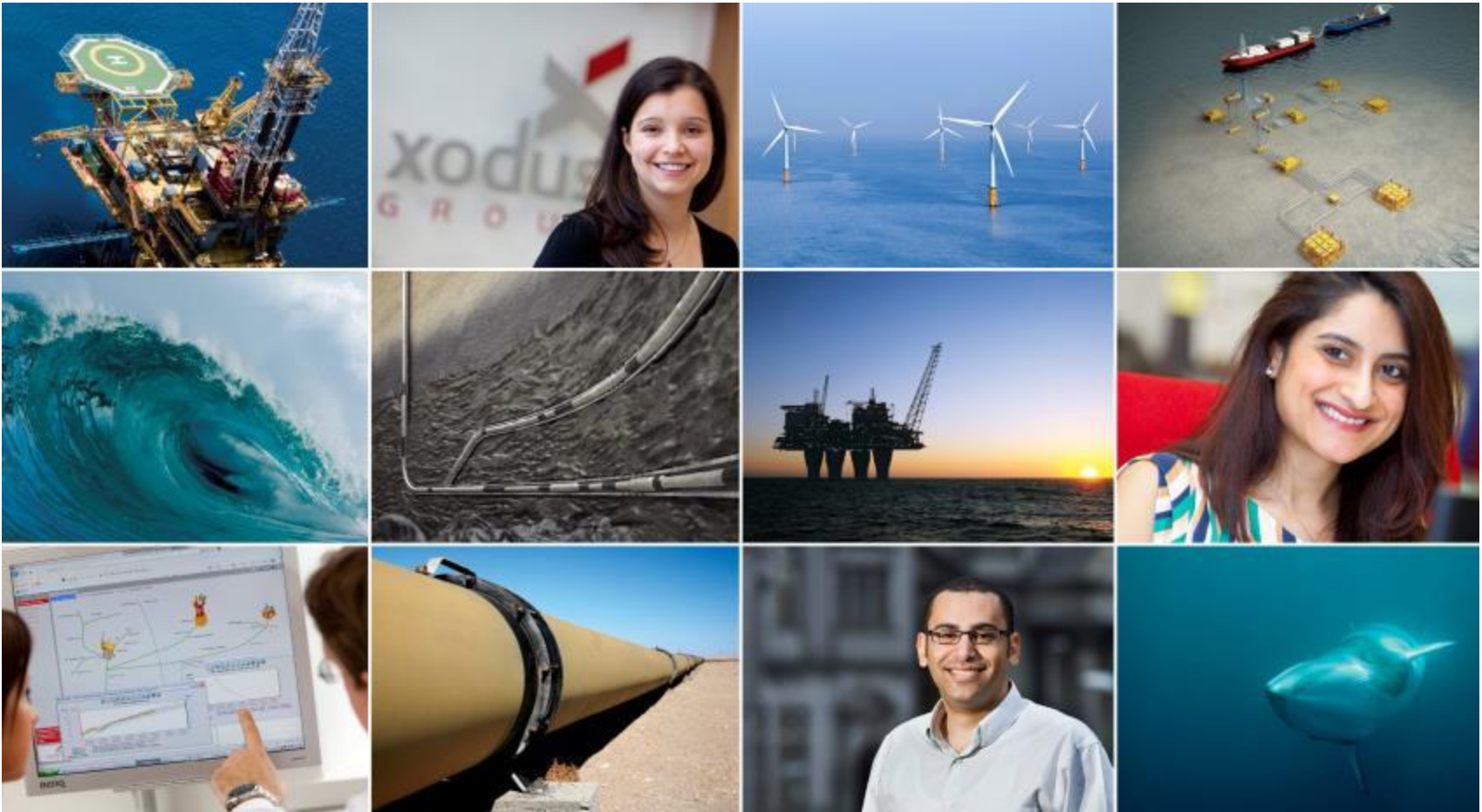

Our Vision

To be the world leader in energy consultancy

To integrate our services in ways that help our clients achieve success

To bring no nonsense know-how to everything we do



Offshore Renewables Projects

Worldwide Presence and Experience



EMEC

Site selection
EIA guidance
Environmental monitoring programme
Baseline descriptions full scale & nursery sites
Management system support & procedures



MeyGen Tidal Energy Project

EIA
Engineering
Commercial



Costa Head Wave Energy Project

Stakeholder engagement
Geotechnical
EIA



Aegir Wave Energy Project

Stakeholder engagement
EIA Scoping



NorthConnect

Route selection study



Tidal technology developer

Engineering design
EIA
HSE



Xodus presence in Japan through



Offshore wind turbine manufacturer

HSE training



UK Offshore wind projects



EMEC Developers



OceanLinx

EIA for 30MW demonstration project



Hywind Scotland Pilot Park

Stakeholder engagement
Geotechnical
EIA



Marine Energy Mission 2012

Consenting & project development



Siadar Wave Energy Project

Marine wildlife monitoring
Stakeholder engagement
EIA
RWE npower renewables

APL Orkney Projects

Marine wildlife monitoring
Site selection
Stakeholder engagement
EIA



Other clients



VOITH

Voith Hydro

Xodus office locations

Xodus Group Capabilities

Strategic Advice and **Project Support**



Strategic Risk Management

- > Strategic Environmental Assessment
- > Risk management / Value Decision Risk Management (VDRM)
- > Corporate strategy & policy
- > Sustainability strategy
- > Government advisory role
- > Due Diligence
- > Environmental management systems (EMS)
- > Peer review / peer assist
- > Expert witness

Low Carbon Financial Support

- > Government grant support
- > Monte Carlo simulation
- > Levelised cost of energy models

Environment & Consenting

- > Legislation and policy advice
- > Constraints mapping & GIS
- > Concept & site selection
- > Monitoring and survey
- > EIA screening and scoping
- > Environmental Statement and consent applications
- > Stakeholder engagement
- > Environmental management plans & contingency planning
- > Decommissioning Programmes

Resource Assessment & Physical Array Layout

- > Resource assessment
- > Array optimisation
 - > physical, technical, environmental, commercial factors
- > Levelised cost of energy models

Marine Energy Technology (wave & tidal)

- > Turbine selection (technical & commercial)

Foundations & Substructures

- > Geotechnical advice
- > Strong structural engineering
- > Structural optimisation
- > Offshore engineering focus

Construction & Commissioning

- > Senior offshore construction experts
- > Significant experience of single & multi lift operations & design
- > Vessel and equipment design
- > Construction strategy
- > Risk analysis
- > Construction monitoring
- > Impact on construction strategy (onshore or offshore strategies)
- > High risk elements of commissioning
- > Personnel safety
- > Overall schedule risk

Operations & Maintenance and HSE

- > O&M strategy development
- > Modelling based on detailed understanding of turbines, vessels & weather analysis
- > HSE management systems / CDM co-ordinators in the UK

conceptual definition

design

construction

operation

SCRIBBILIB consultancy



Project Management

- concept
- design
- build
- installation
- health & safety
- environmental monitoring

+44 (0)1856 851133

info@scribbilib.info

Procurement

- supply chain
- tender preparation
- negotiation
- contracts
- delivery
- maintenance



[illegible]

FLOW

of the Tidal

scapa **TRANSITION**

HABITAT SITE

SONAR variable depths beam

PROJECT ENERGY

ADCP

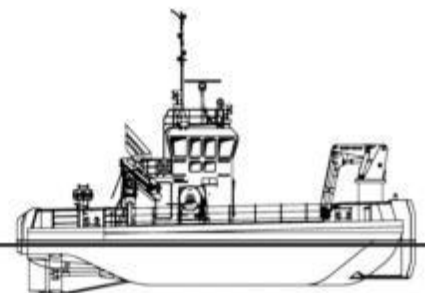
[illegible]

SONAR springs



SCOTMARINE LTD

MULTICAT® M.V. ORCADIA

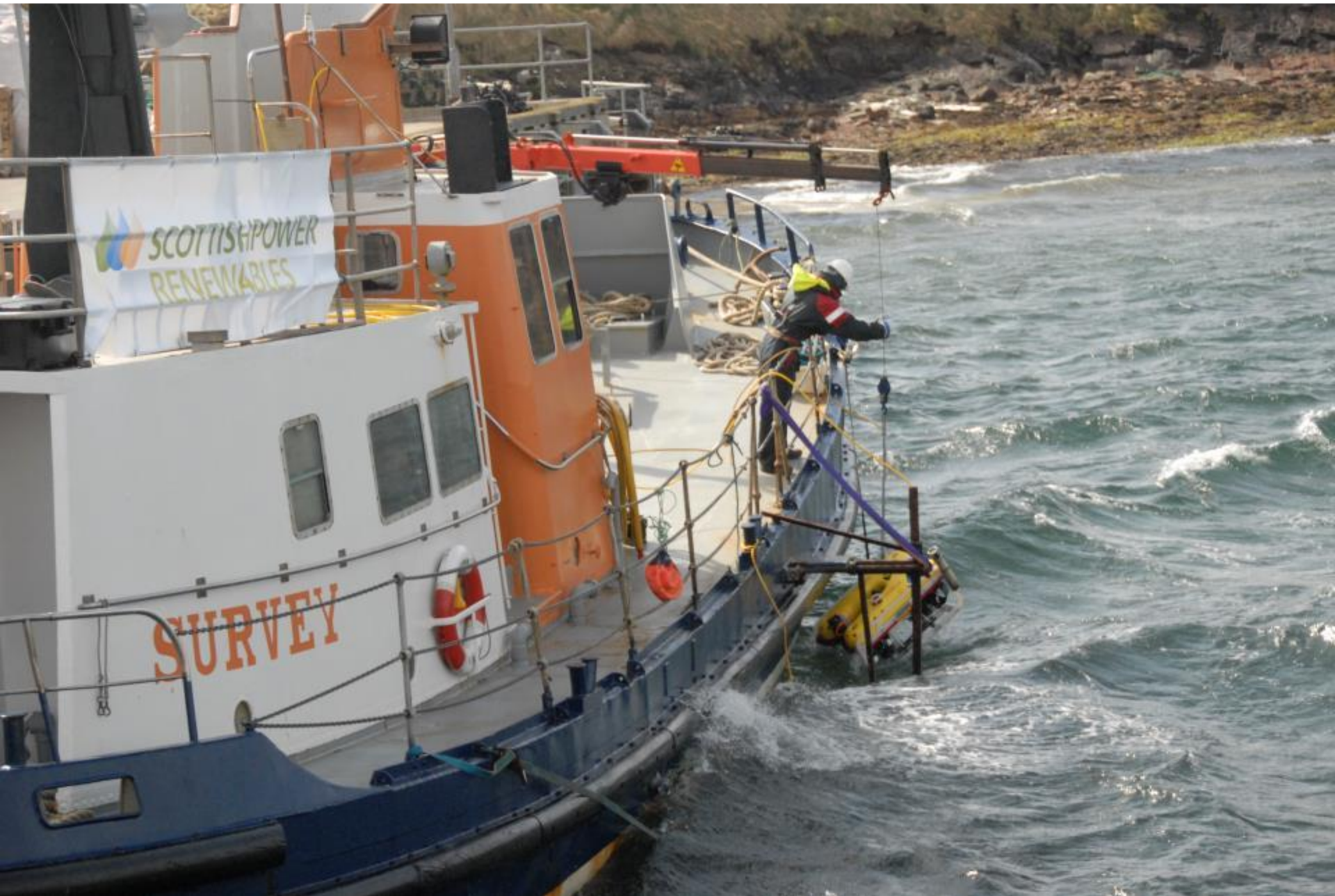


WWW.SCOTMARINE.NET | VESSEL: 07920 024164 | OWNER: 07787 505841 | OFFICE: 01856 851641

ROVING EYE ENTERPRISES ROV SPECIALISTS FOR RENEWABLES



ROVING EYE ENTERPRISES



ROV SPECIALISTS FOR RENEWABLES

ROVING EYE ENTERPRISES ROV SPECIALISTS FOR RENEWABLES





A leading provider of Marine Project Management and Consultancy Services to the Offshore Renewable Energy Sector, Shipping and Port industry

Managing risks & opportunities in marine energy

“Innovation, Safety and Client Satisfaction”



Experienced Mariners and Engineers- providing

- Risk Management of Marine Operations
- Preparation of Standard Operating Procedures
- Marine Installation Management
- Auditing of Safety Systems vessels and crews
- Client Representation
- Warranty Surveys
- Marine Co-ordination Management
- Emergency Response Delivery





- Environmental consultants who specialise in environmental risk management.
- We have a 360° vision considering effects of development on the environment and also environmental effects upon developments.
- Core areas are strategic planning, assessment and surveying, communications & training and integrated project support

Some of our clients

Wave Technology

Tidal Technology



Organisations, governments multinationals



The Scottish
Government



Shetland
Islands Council



Isle of Man
Government
Riaghda Nollan Vannin



Agip KCO



ROSNEFT



Exporting success





Specialist provider of

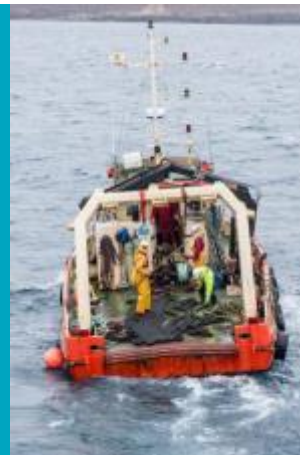
- Vessel charter**
- Commercial diving**
- Marine consultancy**





**Proven track record working on
both tidal and wave test sites**

**Extensive experience in the deployment
of marine renewables devices**





Bryan J Rendall Electrical Ltd

Electrical and Renewable Engineering

Design & Design Reviews in a Challenging Environment

Using ETAP software, Studies ranging from:

- Short Circuit Analysis
- Load Flows & Transient Stability Analysis
- Earth Grid Design & Hot/Cold Site Determination & Cable Thermal Rating Studies
- Harmonic Analysis
- Optimal Power Flow Analysis
- Protective Device Co-Ordination

Clients include:





Bryan J Rendall Electrical Ltd

Electrical and Renewable Engineering



- **Over a Decade of Engineering Experience for EMEC & Developers**
- ***Established 1994***
- ***The appointed Electrical Consultant & Contractor for EMEC***
- ***Conducting:***
- **Substation extensions at both Orkney test sites**
- **Electrical System design & reviews using ETAP software**
- **On & off-shore works, including subsea cable stripping, splicing, termination & testing.**

www.bjre.co.uk

Tel: +44 (0) 1856 879086